



# C-SERT INSTALLATION INSTRUCTIONS

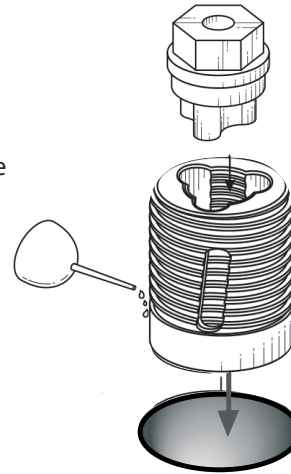
## STEP 1

Drill out the damaged threads to the diameter shown on the C-Sert packaging, and slightly deeper than the length of the C-Sert.



## STEP 2

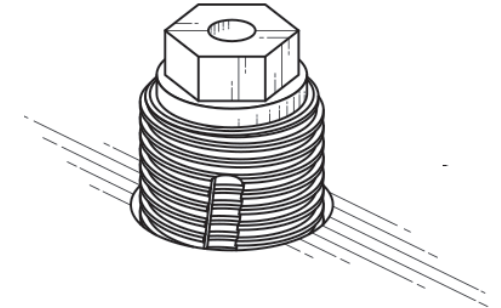
Apply plenty of cutting oil to the C-Sert and fit the hex-head installer into the top of the C-Sert.



## STEP 3

Put the C-Sert into the hole.

Give the hex-head installer a half dozen solid hits to seat the C-Sert fully in the pilot hole.



## STEP 4

Always turn the C-Sert in COUNTER CLOCKWISE

To turn the C-Sert:

**Sizes 1/4" -- 1/2" and 6mm -- 12mm:**

Use a 3/8" or 1/2" drive ratchet.

**Sizes 5/8" -- 7/8" and 14mm -- 20mm:**

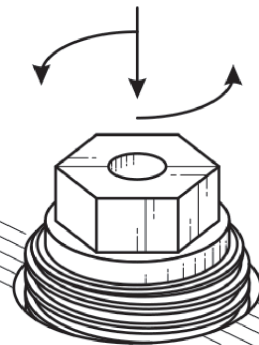
Use a 1/2" or 3/4" drive impact wrench.

**Sizes 1" -- 1-1/4" and 24mm -- 30mm:**

Use a 1" drive impact wrench.

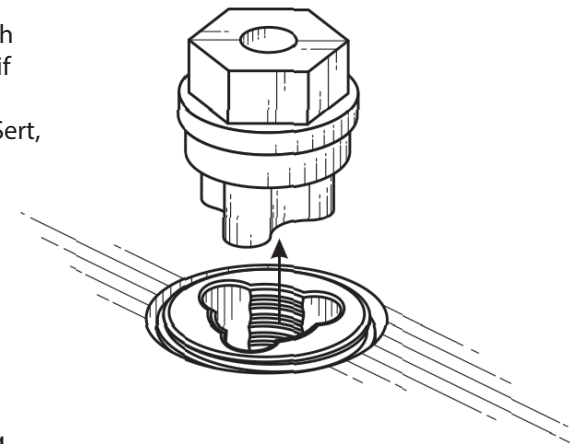
**For all larger sizes:**

Use a hydraulic or pneumatic torque multiplier rated at 5000 Nm or higher.



## STEP 5

Once the top of the C-Sert is flush with the surface (or a bit below, if you prefer) remove the installer, break up the chips inside the C-Sert, and blow them out.



Patents & Patents Pending